

How to get through Argos (coming from Athens)

As you approach Argos, there is a tall sign on your left marking a LIDL store

100m after this the road crosses a bridge (over a large dry river bed)

Note the milometer reading here (or set it to zero)

500m after the bridge bear left - follow the sign for Nafplion 12km (photo 1)

850m after the bridge bear left again NOT right which is no entry (photo 2)

At 1.7km keep straight (do NOT bear left) sign for Nafplion 12km and Tripoli 56km (photo 3)

At 2.2km you pass a bus station and just after come to a junction - (photo 4)

Follow the sign for Tripoli 56.5km & go straight towards the large church

(do NOT take the left turn signposted for Nafplion 10km)

Follow this road - after a few hundred metres it widens and becomes a dual carriageway

At 3.7km there are some traffic lights - go straight ahead at this junction

At 5.4 km the road ends and there is a stop sign go LEFT here

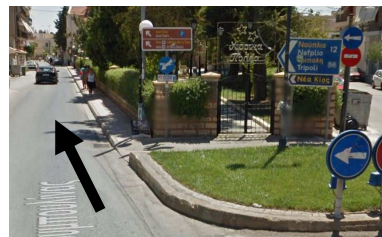


photo 1

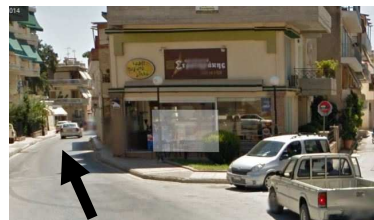


photo 2



photo 3

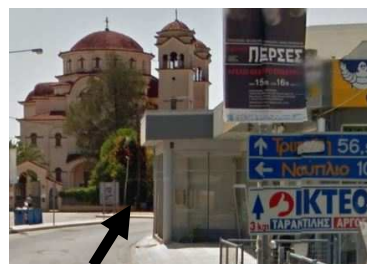


photo 4

